



Premium Café barriers



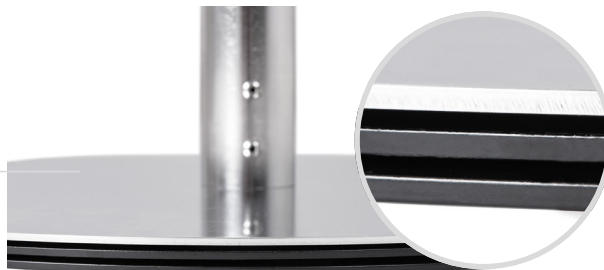
Screw mounting



CLICK type quick coupler



Outdoor - 1 to 3 plates can be added for additional stabilisation (only applies to flat base fences)

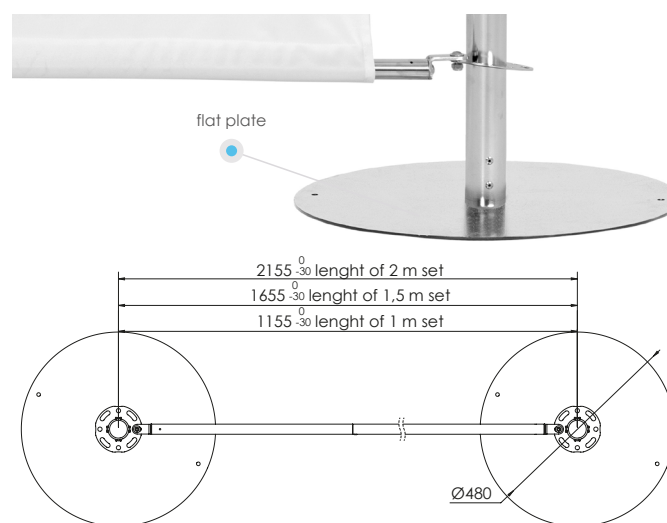
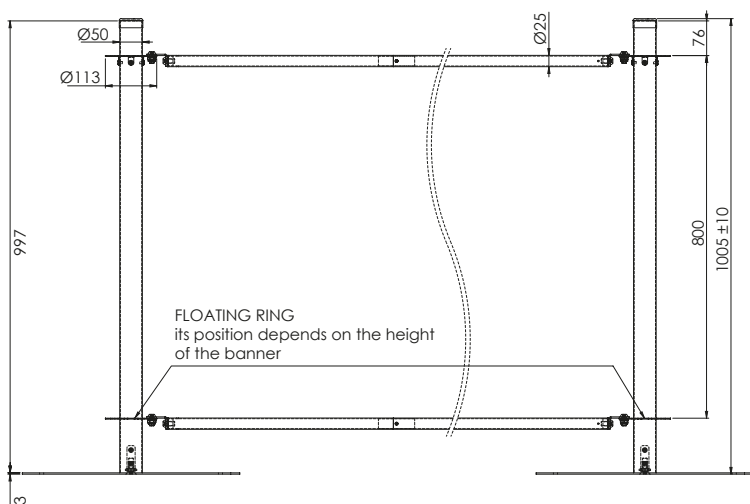
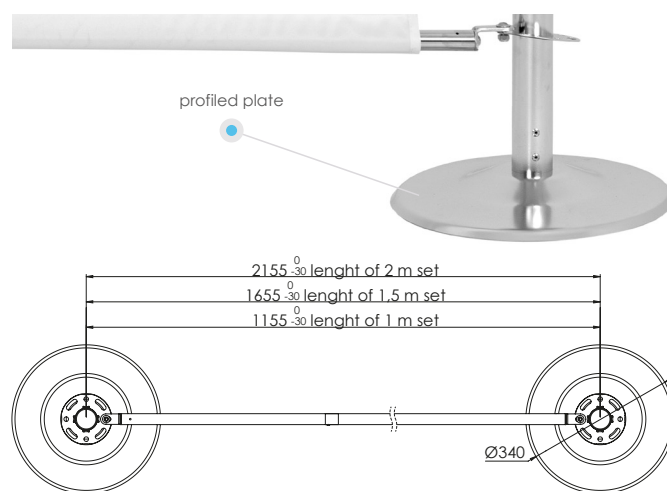
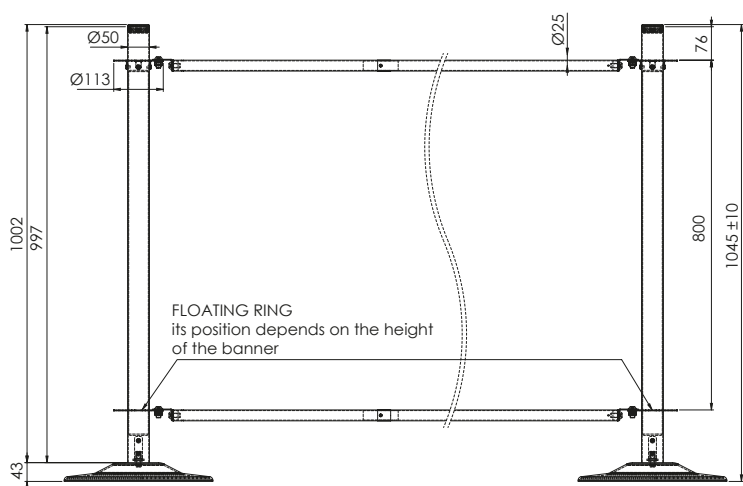


| Barrier type | 1 m | | 1,5 m | | 2 m | |
|--|--|------|----------|------|----------|------|
| | profiled | flat | profiled | flat | profiled | flat |
| Base types | profiled | flat | profiled | flat | profiled | flat |
| Base weight [kg] | 2,35 | 4,3 | 2,35 | 4,3 | 2,35 | 4,3 |
| Weight of span with 1 layer of base [kg] | 17 | 21 | 18 | 22 | 19 | 23 |
| Purpose of use | indoor, base: 1 pcs. outdoor, base: 2 or 3 pcs. | | | | | |

| | | | |
|------------------------|---|----------|----------|
| Material | barrier: polished stainless steel, bases: stainless steel | | |
| Printing techniques | single- or double-sided* printing on knitted fabric | | |
| Banner dimensions [cm] | 90 x 80 | 140 x 80 | 190 x 80 |

*two layers of knitted fabric with a divider

| | Bulk packaging | | | |
|---------------------------------------|-------------------|------------------|------------------|-------------------------------------|
| | Poles | Bases | | Crossbars |
| | | profiled | flat | |
| No. of pallets | 1 | 1 | 1 | 1 |
| Packaging dimensions [L x W x H] [mm] | 120 x 120 x 1050 | 550 x 550 | 450 x 350 x 60 | 70 x 70 x 1100 |
| Quantity per package | 1 | 1 | 2 | 2 |
| Packs per pallet | 90 | 272 | 136 | 180 |
| Pallet weight [kg] | 540 | 850 | 430 | 1 m - 280 / 1,5 m - 380 / 2 m - 550 |
| Pallet dimensions [L x W x H] [mm] | 1200 x 800 x 2050 | 1200 x 800 x 600 | 1200 x 800 x 600 | 1200 x 800 x 1950 |





Economic Café barriers



Screw mounting

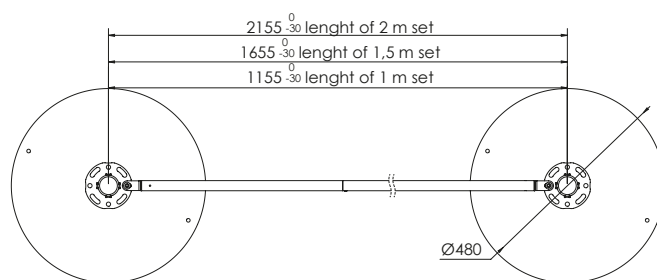
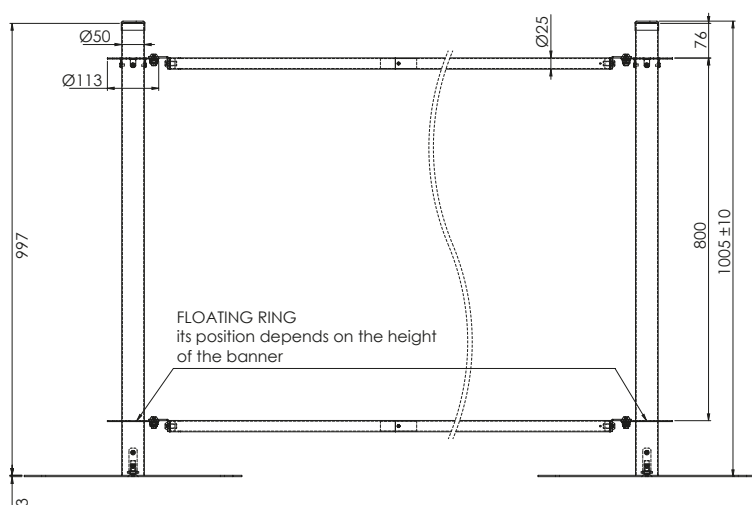


| Barrier type | 1 m | 1,5 m | 2 m |
|--|--|-------|------|
| Base types | flat | | |
| Base weight [kg] | 4,3 | | |
| Weight of span with 1 layer of base [kg] | 16 | 16,5 | 16,9 |
| Purpose of use | indoor, base: 1 pcs. outdoor, base: 2 or 3 pcs. | | |

| | | | |
|------------------------|--|----------|----------|
| Material | barrier: galvanized steel, powder coated , bases: powder painted steel | | |
| Printing techniques | single- or double-sided* printing on knitted fabric | | |
| Banner dimensions [cm] | 90 x 80 | 140 x 80 | 190 x 80 |

*two layers of knitted fabric with a divider

| | Bulk packaging | | |
|---------------------------------------|-------------------|------------------|-------------------------------------|
| | Poles | Bases | Crossbars |
| No. of pallets | 1 | 1 | 1 |
| Packaging dimensions [L x W x H] [mm] | 120 x 120 x 1050 | 550 x 550 | 70 x 70 x 1100 |
| Quantity per package | 1 | 1 | 2 |
| Packs per pallet | 90 | 272 | 180 |
| Pallet weight [kg] | 300 | 850 | 1 m - 280 / 1,5 m - 380 / 2 m - 550 |
| Pallet dimensions [L x W x H] [mm] | 1200 x 800 x 2050 | 1200 x 800 x 600 | 1200 x 800 x 1950 |



Indoor - flat plate

Outdoor - 1 to 3 plates can be added to one post, thus regulating its load